

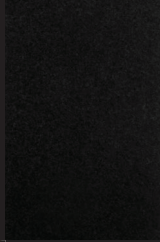




GOLDBERG BROTHERS

BARN DOOR HARDWARE

MP SERIES (Multi-Family Projects)



MP SERIES COLORS		
		
BLACK	SILVER METALLIC	ARCH BRONZE





GOLDBERG BROTHERS

BARN DOOR HARDWARE

MP SERIES (Multi-Family Projects)



MP SERIES is our barn door hardware product line designed for large construction and remodeling projects such as apartment complexes, hotels and office buildings, or anywhere cost is a concern and customization options are less of a priority. Designed to fit more widely used door sizes, MP SERIES products are a better value and outperform inferior, imported hardware.

What makes MP Series better?

- 5 installation configurations for 1 $\frac{3}{8}$ " to 1 $\frac{3}{4}$ " doors
- 7 track lengths for standard and biparting doors
- Custom-cut tracks available up to 16'
- Track attaches to wall with 6 bolts for superior stability
- 5 roller-hanger options
- 3 color options: black, silver metallic, arch bronze
- Sturdy aluminum floor T-guide – not plastic
- Warp-resistant DuPont™ Delrin® silent rollers

Can be installed in 5 different configurations:

- 1 $\frac{3}{8}$ " thick door
- 1 $\frac{3}{8}$ " thick door with $\frac{1}{2}$ " extensions
- 1 $\frac{3}{8}$ " thick door with 1" extensions
- 1 $\frac{3}{4}$ " thick door
- 1 $\frac{3}{4}$ " thick door with $\frac{1}{2}$ " extensions

Door weight limits:

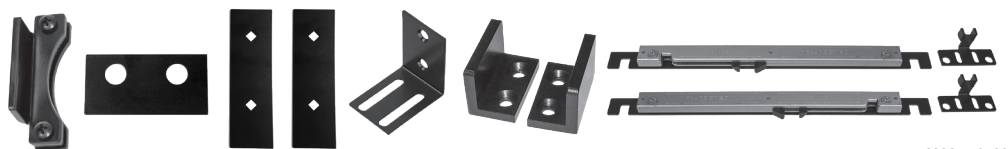
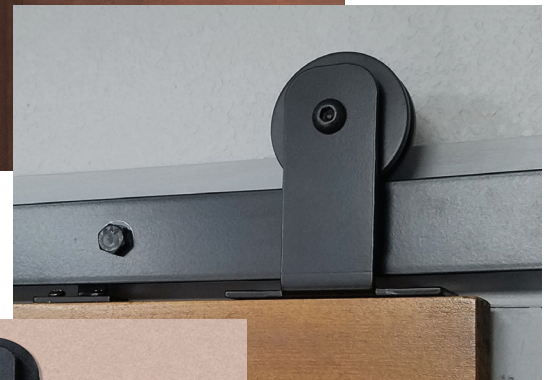
- horseshoe mount - 250 lb
- J-strap - 200 lb
- straight strap - 125 lb
- J-top mount - 100 lb
- straight top mount - 75 lb

Hardware sets include:

- DuPont™ Delrin® silent rollers with ball bearings
- aluminum T-guide
- anti-jump blocks
- track stops
- extra-long $\frac{5}{16}$ " lag bolts (6 per set)
- 1" nylon wall spacers (6 per set)
- $\frac{1}{2}$ " nylon wall spacers (12 per set)
- drywall fender washers

Optional accessories:

- adjustable track stop
- track connecting plate
- hollow core back support plate
- sidewall bracket
- adjustable U-guide
- Soft Stop motion buffer system
- and more!



6008B1 0723