

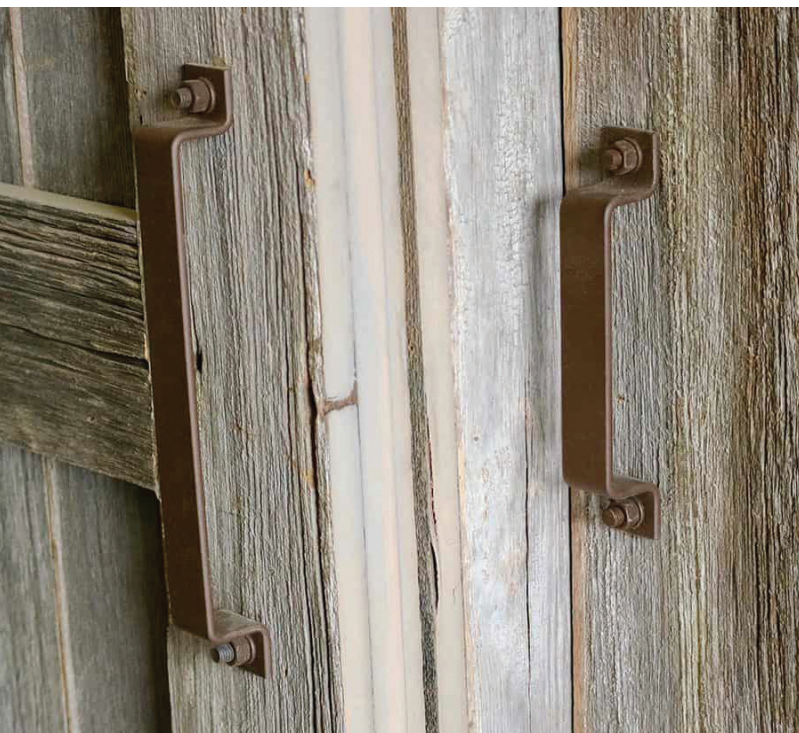


GOLDBERG BROTHERS

BARN DOOR HARDWARE

2023 EDITION

GENERAL HARDWARE PRODUCTS CATALOG



PULL HANDLES • EDGE WRAP • DUMMY HARDWARE • NUMBER SIGNS • ETC.





GOLDBERG BROTHERS

BARN DOOR HARDWARE

GENERAL HARDWARE CATALOG

TABLE OF CONTENTS

Pull handles	2	Barn door edge wrap	12
Flush pulls	4	Home theater door pulls, windows	13
Pull handle + flush pull sets	5	House number signs	14
Miscellaneous barn door accessories	6	Apartment number signs	14
Exterior dummy roller barn door hardware	8	Shelves and shelf/countertop brackets	15
Interior dummy roller barn door hardware	10	Warranty	16
		Color Samples	inside back cover

Goldberg Brothers is best known for our award-winning barn door hardware sets, but that isn't all we make. Many of our barn door accessories can be used with any brand or style of door, with or without our hangers and tracks. We also make other distinctive products to add style, convenience, and value to your home.

Goldberg Brothers products have been proudly made in USA since 1897. Our commitment to quality, craftsmanship, and value is built into everything we do.

GENERAL HARDWARE: DOOR PULL HANDLES

4" Pull Handle (1 each, with bolts and nuts)

1"×4" CL bolts ×¾"



fits ¾" to 1⅝" thick shutters or cabinets panels	6003PH04-*
fits 1¼" to 1⅝" thick doors	6007PH304-*
fits 1½" to 1¾" thick doors	6007PH404-*

7" Pull Handle (1 each, with bolts, washers and nuts)

1½"×7" CL bolts ×1¼"



fits 1⅜" thick door	6001PH307-*
fits 1¾" thick door	6001PH407-*
fits 2¼" thick door	6001PH507-*
Universal (fits all 3)	6001PH007-*

11" Pull Handle (1 each, with bolts, washers and nuts)

1½"×11" CL bolts ×1¼"



fits 1⅜" thick door	6001PH311-*
fits 1¾" thick door	6001PH411-*
fits 2¼" thick door	6001PH511-*
Universal (fits all 3)	6001PH011-*

16" Pull Handle (1 each, with bolts, washers and nuts)

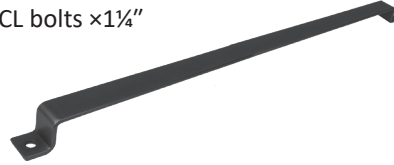
1½"×16" CL bolts ×1¼"



fits 1⅜" thick door	6001PH316-*
fits 1¾" thick door	6001PH416-*
fits 2¼" thick door	6001PH516-*
Universal (fits all 3)	6001PH016-*

24" Pull Handle (1 each, with bolts, washers and nuts)

1½"×24" CL bolts ×1¼"



fits 1⅝" thick door	6001PH324-*
fits 1¾" thick door	6001PH424-*
fits 2¼" thick door	6001PH524-*
Universal (fits all 3)	6001PH024-*

3" Edge Pull Handle (1 each, with screws)

1⅝"×3"×1"
fits 1⅝" to 2¼"
thick doors



powder coated	6002EP03-*
stainless steel	6002EP03-SS

6" Edge Pull Handle (1 each, with screws)

1⅝"×6"×1"
fits 1⅝" to 2¼"
thick doors



powder coated	6002EP06-*
stainless steel	6002EP06-SS

10" Edge Pull Handle (1 each, with screws)

1⅝"×10"×1"
fits 1⅝" to 2¼"
thick doors



powder coated	6002EP010-*
stainless steel	6002EP010-SS

15" Edge Pull Handle (1 each, with screws)

1⅝"×15"×1"
fits 1⅝" to 2¼"
thick doors



powder coated	6002EP15-*
stainless steel	6002EP15-SS

Replace the * in the product's SKU with the code for the desired color. See color samples and codes on inside back cover.

GENERAL HARDWARE: DOOR PULL HANDLES

23" Edge Pull Handle (1 each, with screws)

1½"×23"×1"
fits 1⅜" to 2¼"
thick doors



powder coated	6002EP23-*
stainless steel	6002EP23-SS

16" Stainless Steel Pull Handle (1 each, with bolts, washers, and caps)

1¼"×16" CL bolts ×1¼"



fits 1⅜" thick door	6005PH316
fits 1¾" thick door	6005PH416
fits 2¼" thick door	6005PH516
Universal (fits all 3)	6005PH016

7" Stainless Steel Pull Handle (1 each, with bolts, washers, and caps)

1¼"×7" CL bolts ×1¼"



fits 1⅜" thick door	6005PH307
fits 1¾" thick door	6005PH407
fits 2¼" thick door	6005PH507
Universal (fits all 3)	6005PH007

Hands Free Foot Pull (1 each, with screws)

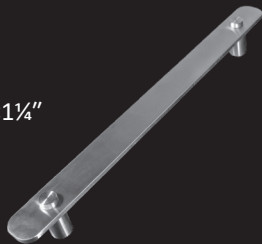
3½"×1½"×1½"



powder coated	6001HFFP-*
stainless steel	6005HFFP

11" Stainless Steel Pull Handle (1 each, with bolts, washers, and caps)

1¼"×11" CL bolts ×1¼"



fits 1⅜" thick door	6005PH311
fits 1¾" thick door	6005PH411
fits 2¼" thick door	6005PH511
Universal (fits all 3)	6005PH011



Edge Pull Handle

Replace the * in the product's SKU with the code for the desired color. See color samples and codes on inside back cover.

GENERAL HARDWARE: DOOR FLUSH PULLS

6" Flush Pull (1 each, with face plate, dustbox and screws)

dustbox mortise
2"x5"x½"

cover
2½"x6"



6001FP06-*

6" Flush Pull, Partial Radius (1 each, with face plate, dustbox, and screws)

dustbox mortise
2"x5"x½"

cover
2½"x6"



raw steel or powder coated

6001FP06P-*

stainless steel

6005FP06P

12" Flush Pull (1 each, with face plate, dustbox and screws)

dustbox mortise
2"x11"x½"

cover
2½"x12"



6001FP12-*

12" Flush Pull, Partial Radius (1 each, with face plate, dustbox, and screws)

dustbox mortise
2"x11"x½"

cover
2½"x12"



raw steel or powder coated

6001FP12P-*

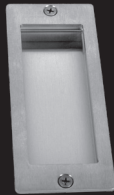
stainless steel

6005FP12P

Stainless Steel 6" Flush Pull (1 each, with faceplate, dustbox and screws)

dustbox mortise
2"x5"x½"

cover
2½"x6"



6005FP06

6" Flush Pull, Full Radius (1 each, with face plate, dustbox, and screws)

dustbox mortise
2"x5"x½"

cover
2½"x6½"



raw steel or powder coated

6001FP06F-*

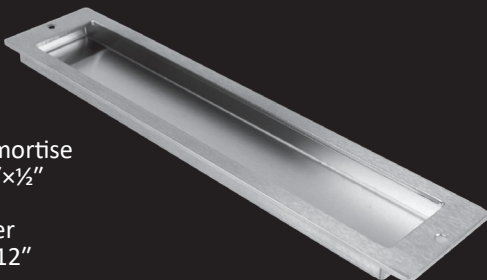
stainless steel

6005FP06F

Stainless Steel 12" Flush Pull (1 each, with faceplate, dustbox and screws)

dustbox mortise
2"x11"x½"

cover
2½"x12"



6005FP12

12" Flush Pull, Full Radius (1 each, with face plate, dustbox, and screws)

dustbox mortise
2"x11"x½"

cover
2½"x12½"



raw steel or powder coated

6001FP12F-*

stainless steel

6005FP12F

Replace the * in the product's SKU with the code for the desired color. See color samples and codes on inside back cover.

GENERAL HARDWARE: DOOR FLUSH PULLS, DOOR PULL SETS

6" Flush Pull with Wings (1 each, with face plate, dustbox, and screws)

dustbox mortise
2"x5"x½"

cover
3"x6½"



powder coated	6001FP06W-*
stainless steel	6005FP06W

12" Flush Pull with Wings (1 each, with face plate, dustbox, and screws)

dustbox mortise
2"x11"x½"

cover
3"x12½"



powder coated	6001FP12W-*
stainless steel	6005FP12W

3" Flush Pull (1 each, with face plate, dustbox, and screws)

dustbox mortise
1⅞"x2⅞"x⅜"

cover
1½"x3"



6003FP03-*

Router Templates (set of 3, clear plastic)



flush pulls and privacy latch templates 6001TMP-2

4" Pull Handle + 3" Flush Pull set (1 pair, with bolts and nuts)



fits ¾" to 1⅛" thick doors

6003PP043-*

7" Pull Handle + 6" Flush Pull set (1 pair, with bolts and nuts)



fits 1⅝" thick doors

6001PP3076-*

fits 1¾" thick doors

6001PP4076-*

fits 2¼" thick doors

6001PP5076-*

universal - fits most doors

6001PP0076-*

11" Pull Handle + 6" Flush Pull set (1 pair, with bolts and nuts)



fits 1⅝" thick doors

6001PP3116-*

fits 1¾" thick doors

6001PP4116-*

fits 2¼" thick doors

6001PP5116-*

universal - fits most doors

6001PP0116-*

16" Pull Handle + 12" Flush Pull set (1 pair, with bolts and nuts)



fits 1⅝" thick doors

6001PP31612-*

fits 1¾" thick doors

6001PP41612-*

fits 2¼" thick doors

6001PP51612-*

universal - fits most doors

6001PP01612-*

Replace the * in the product's SKU with the code for the desired color. See color samples and codes on inside back cover.

GENERAL HARDWARE: BARN DOOR ACCESSORIES

Privacy Latch (1 each, with faceplate, dustbox, strike plate, and screws)

dustbox mortise
2⅞"×⅞"×½"

cover
1¼"×3"

strike plate
1"×1½"



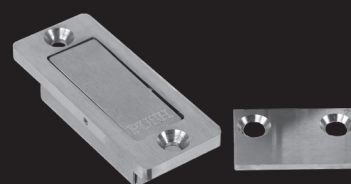
6001PL-*

Stainless Steel Privacy Latch (1 each, with faceplate, dustbox, strike plate, and screws)

dustbox mortise
2⅞"×⅞"×½"

cover
1¼"×3"

strike plate
1"×1½"



6005PL

Biparting Privacy Latch (1 set, with screws)

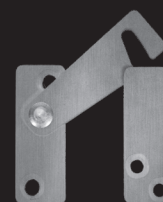
2½"×2"



6001PLP-*

Stainless Steel Biparting Privacy Latch (1 set, with screws)

2½"×2"



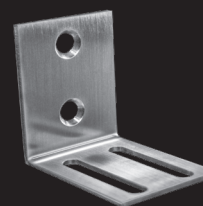
6005PLP

Sidewall Bracket (1 each, with screws and nuts)



standard	1½"×2"×2"	6001SW-*
long	1½"×2"×2½"	6001SWE-*
extra long	1½"×2"×3¼"	6001SWEX-*

Stainless Steel Sidewall Bracket (1 each, with screws and nuts)



standard	1½"×2"×2"	6005SW
long	1½"×2"×2½"	6005SWE
extra long	1½"×2"×3¼"	6005SWEX

Floor Guide (T) (aluminum, 1 each, with screws)

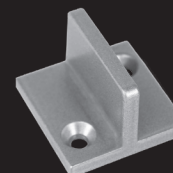
1½"×1½"×1"



6001G-*

Floor Guide (T) (aluminum, 1 each, with screws)

1½"×1½"×1"



silver powder-coated to match stainless steel hardware 6005G

All-in-One Floor Guide (1 each, with screws)



6001GA-*

Stainless Steel All-in-One Floor Guide (1 each, with screws)



6005GA

Replace the * in the product's SKU with the code for the desired color. See color samples and codes on inside back cover.

GENERAL HARDWARE: BARN DOOR ACCESSORIES

Floor T Guide 24" (aluminum, 1 each, with screws)

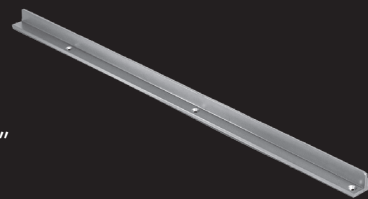
1½"×24"×1"



6001G2-*

Floor T Guide 24" (aluminum, 1 each, with screws)

1½"×24"×1"

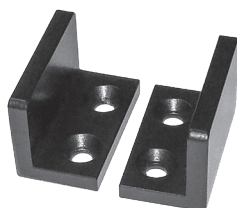


silver powder coated to match stainless steel

6005G2

Adjustable U-Guide (2 pieces, with screws)

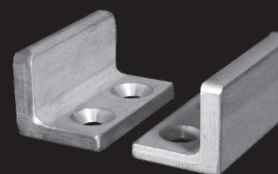
7⁄8"×1"×1½" each



6001U-*

Stainless Steel Adjustable U-Guide (2 pieces, with screws)

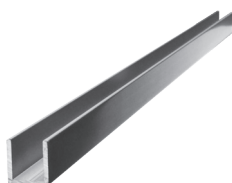
7⁄8"×1"×1½" each



6005U

Continuous Floor Guide (1 each, aluminum)

1⅞"×¾"×95"



6001FGC

Continuous Floor Guide Pins (set of 2, with screws)

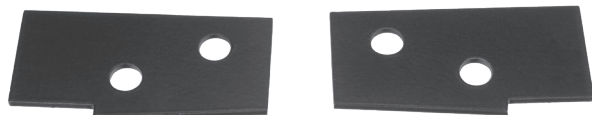
2"×¾"×½" each



6001FGP

Hanger Stabilizer (Set of 2, with screws)

2¼"×1⅞" each



6001HS-*

Stainless Steel Hanger Stabilizer (Set of 2, with screws)

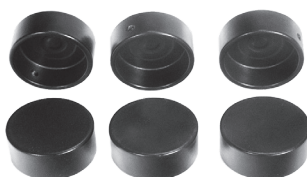
2¼"×1⅞" each



6005HS

Track Lag Cover Caps (set of 6 with screws and installation tool)

1" dia. each



Powder-coated

6001LCC-*

Stainless Steel

6005LCC

Touch-up Paint (1 bottle, with brush)

0.6 fl oz



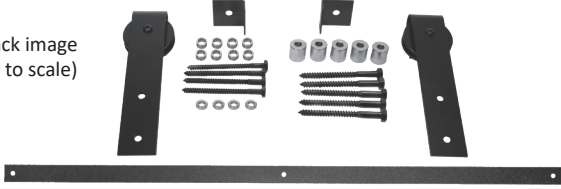
6001P-*

Replace the * in the product's SKU with the code for the desired color. See color samples and codes on inside back cover.

GENERAL HARDWARE: EXTERIOR DUMMY ROLLER SERIES

Ext. 1-Panel J Strap Dummy Hardware Set with 4' track

(track image
not to scale)



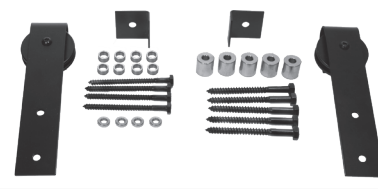
for exterior installations

6004ES4-*

Set includes:

- 4' track
- 2 non-functional J-strap hangers
- 2 track stops
- exterior mounting hardware (lag bolts and spacers)

Ext. 1-Panel J Strap Dummy Hardware Set - no track



for exterior installations

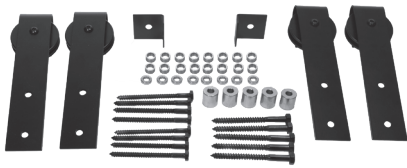
6004EH-*

Set includes:

- 2 non-functional J-strap hangers
- 2 track stops
- exterior mounting hardware (lag bolts and spacers)

Ext. 2-Panel J Strap Dummy Hardware Set with 8' track

(track image
not to scale)



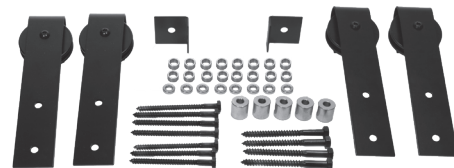
for exterior installations

6004EP8-*

Set includes:

- 8' track
- 4 non-functional J-strap hangers
- 2 track stops
- exterior mounting hardware (lag bolts and spacers)

Ext. 2-Panel J Strap Dummy Hardware Set - no track



for exterior installations

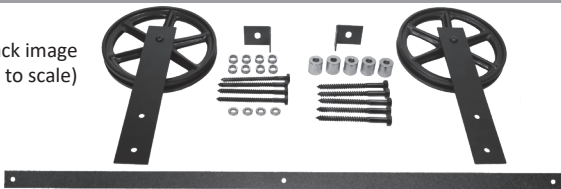
6004EHP-*

Set includes:

- 4 non-functional J-strap hangers
- 2 track stops
- exterior mounting hardware (lag bolts and spacers)

Ext. 1-Panel Wagon Wheel Dummy Hardware Set with 4' track

(track image
not to scale)



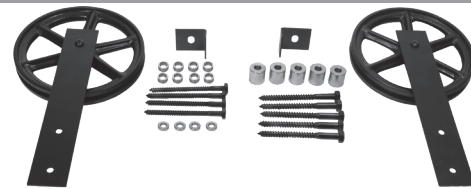
for exterior installations

6004ESW4-*

Set includes:

- 4' track
- 2 non-functional J-strap hangers
- 2 track stops
- exterior mounting hardware (lag bolts and spacers)

Ext. 1-Panel Wagon Wheel Dummy Hardware Set - no track



for exterior installations

6004EHW-*

Set includes:

- 2 non-functional J-strap hangers
- 2 track stops
- exterior mounting hardware (lag bolts and spacers)

Ext. 2-Panel Wagon Wheel Dummy Hardware Set with 8' track

(track
image
not to
scale)



for exterior installations

6004EPW8-*

Set includes:

- 8' track
- 4 non-functional J-strap hangers
- 2 track stops
- exterior mounting hardware (lag bolts and spacers)

Ext. 2-Panel Wagon Wheel Dummy Hardware Set - no track



for exterior installations

6004EHPW-*

Set includes:

- 4 non-functional J-strap hangers
- 2 track stops
- exterior mounting hardware (lag bolts and spacers)

Replace the * in the product's SKU with the code for the desired color. See color samples and codes on inside back cover.

GENERAL HARDWARE: EXTERIOR DUMMY ROLLER SERIES

Ext. J Strap Dummy Roller Hanger (1 each, with bolts)

1½"×7¾"×1⅛"



6004ER-*

Exterior Dummy Track Stop (1 each)

1½"×1½"×¾"



for use with Ext. J Strap Dummy Roller Hanger 6004ES-*

Exterior Dummy Wall Mount Kit (5 spacers, 5 bolts)



6004EM-*

Ext. Wagon Wheel Dummy Roller Hanger (1 each, with bolts)

1½"×9⅝" strap
6" diameter wheel



6004ERW-*

Exterior Dummy Track Stop (1 each)

1½"×1½"×¾"



for use with Ext. Wagon Wheel Dummy Roller Hanger 6004ESW-*

Exterior Dummy Track



1½"×⅛"

2'	6004ET2-*
3'	6004ET3-*
4'	6004ET4-*
5'	6004ET5-*
6'	6004ET6-*
7'	6004ET7-*
8'	6004ET8-*
10'	6004ET100-*
16'	6004ET160-*



Exterior J Strap Dummy Roller Hardware



Exterior Wagon Wheel Dummy Roller Hardware

Replace the * in the product's SKU with the code for the desired color. See color samples and codes on inside back cover.

GENERAL HARDWARE: INTERIOR DUMMY ROLLER SERIES

Int. 1-Panel J Strap Dummy Hardware Set with 5' track

(track image
not to scale)



for interior installations

6004IS5-*

Set includes:

- 5' track
- 2 non-functional J-strap hangers
- 2 track stops
- interior mounting hardware

Int. 1-Panel J Strap Dummy Hardware Set - no track



for interior installations

6004IH-*

Set includes:

- 2 non-functional J-strap hangers
- 2 track stops
- interior mounting hardware

Int. 1-Panel Wagon Wheel Dummy Hardware Set with 5' track

(track image
not to scale)



for interior installations

6004ISW5-*

Set includes:

- 5' track
- 2 non-functional J-strap hangers
- 2 track stops
- exterior mounting hardware

Int. 1-Panel Wagon Wheel Dummy Hardware Set - no track



for interior installations

6004IHW-*

Set includes:

- 5' track
- 2 non-functional J-strap hangers
- 2 track stops
- exterior mounting hardware

Int. J Strap Dummy Roller Hanger (1 each, with mounting hardware)

1½"×7¾"×1⅛"



6004IR-*

Int. Wagon Wheel Dummy Roller Hanger (1 each, with mounting hardware)

1½"×9⅛" strap
6" diameter wheel



6004IRW-*

Interior Dummy Track Stop (1 each)

1½"×1½"×¾"



for use with J Strap Int. Dummy Roller Hanger 6004IS-*

Interior Dummy Track Stop (1 each)

1½"×1½"×¾"



for use with Wagon Wheel Int. Dummy Roller Hanger 6004ISW-*

Replace the * in the product's SKU with the code for the desired color. See color samples and codes on inside back cover.

GENERAL HARDWARE: INTERIOR DUMMY ROLLER SERIES

Interior Dummy Wall Mount Kit



6004IM-*

Interior Dummy Track



1½" x ⅛"

2'	6004IT2-*
3'	6004IT3-*
4'	6004IT4-*
5'	6004IT5-*
6'	6004IT6-*
7'	6004IT7-*
8'	6004IT8-*
10'	6004IT100-*
16'	6004IT160-*



Interior Wagon Wheel Dummy Roller Hardware

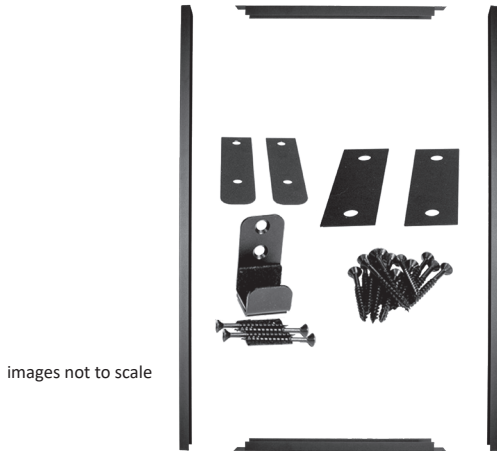


Interior J Strap Dummy Roller Hardware

Replace the * in the product's SKU with the code for the desired color. See color samples and codes on inside back cover.

GENERAL HARDWARE: BARN DOOR EDGE WRAP

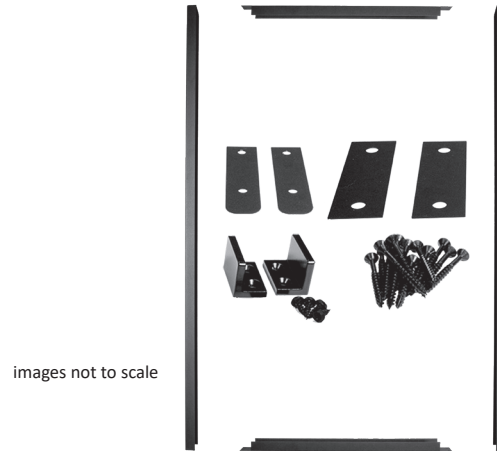
Barn Door Edge Wrap kit (for cabinets & shutters)



images not to scale

$\frac{3}{4}$ " panel thickness & $\frac{3}{4}$ " face return	2'0" x 4'0"	6002BDW724-*
	3'0" x 7'0"	6002BDW737-*
	4'0" x 8'0"	6002BDW748-*
1" panel thickness & $\frac{3}{4}$ " face return	2'0" x 4'0"	6002BDW124-*
	3'0" x 7'0"	6002BDW137-*
	4'0" x 8'0"	6002BDW148-*
	8'0" x 8'0"	6002BDW188-*
Set includes:		
<ul style="list-style-type: none"> • 1 top channel, 1 bottom channel, 2 side channels • adjustable U-guide for $\frac{3}{4}$" to 1" shutter or cabinet panel • shims for use with Goldberg Brothers Shutter Series hangers • all necessary screws 		

Barn Door Edge Wrap kit (for full-size doors)



images not to scale

1 $\frac{3}{8}$ " panel thickness & 1" face return	3'0" x 7'0"	6002BDW337-*
	4'0" x 8'0"	6002BDW348-*
	8'0" x 8'0"	6002BDW388-*
1 $\frac{1}{2}$ " panel thickness & 1" face return	3'0" x 7'0"	6002BDW237-*
	4'0" x 8'0"	6002BDW248-*
	8'0" x 8'0"	6002BDW288-*
1 $\frac{3}{4}$ " panel thickness & 1" face return	3'0" x 7'0"	6002BDW437-*
	4'0" x 8'0"	6002BDW448-*
	8'0" x 8'0"	6002BDW488-*
2 $\frac{1}{4}$ " panel thickness & 1" face return	3'0" x 7'0"	6002BDW537-*
	4'0" x 8'0"	6002BDW548-*
	8'0" x 8'0"	6002BDW588-*
custom kit with panel thickness up to 3" & up to 1 $\frac{1}{2}$ " face return (restrictions may apply)	up to 8'0" x 8'0"	6002BDWC-*
custom kit for radius (curved) door with panel thickness up to 3" & up to 1 $\frac{1}{2}$ " face return (restrictions may apply)	up to 8'0" x 8'0"	6002BDWCR-*
Set includes:		
<ul style="list-style-type: none"> • 1 top channel, 1 bottom channel, 2 side channels • adjustable U-guide for 1$\frac{3}{8}$" to 2$\frac{1}{4}$" thick door • shims for use with Goldberg Brothers Standard Series hangers • all necessary screws 		

8'0" Side Channels Only (2 channels, with screws)



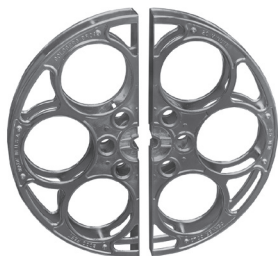
images not to scale

$\frac{3}{4}$ " panel thickness & $\frac{3}{4}$ " face return	6002BDW708-*
1" panel thickness & $\frac{3}{4}$ " face return	6002BDW108-*
1 $\frac{3}{8}$ " panel thickness & 1" face return	6002BDW308-*
1 $\frac{1}{2}$ " panel thickness & 1" face return	6002BDW208-*
1 $\frac{3}{4}$ " panel thickness & 1" face return	6002BDW408-*
2 $\frac{1}{4}$ " panel thickness & 1" face return	6002BDW508-*

Replace the * in the product's SKU with the code for the desired color. See color samples and codes on inside back cover.

GENERAL HARDWARE: HOME THEATER DOOR PULLS, WINDOWS

15" Film Reel Door Pulls (set of 2, with installation hardware)



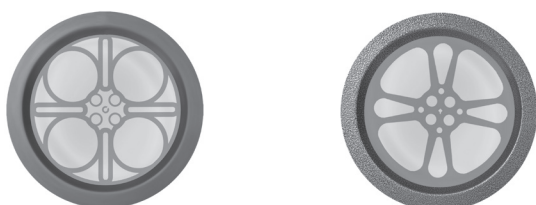
7½"×15"×1½"

fits 1⅝" or 1¾" thick door	silver powder coated	0-1020-01
fits 1⅝" or 1¾" thick door	silver vein powder coated	0-1020-02
fits 1⅝" or 1¾" thick door	PC chrome powder coated	0-1020-03
fits 1⅝" or 1¾" thick door	gold vein powder coated	0-1020-05
fits 1⅝" or 1¾" thick door	black powder coated	0-1020-06
fits 1⅝" or 1¾" thick door	24K gold plated	0-1020-07
fits 1⅝" or 1¾" thick door	copper vein powder coated	0-1020-0C
fits 1⅝" or 1¾" thick door	Jacob's Gold powder coated	0-1020-0G

Set includes:

- 2 aluminum Goldberg Brothers 35mm film reel pull handles
- all necessary installation hardware for the front and back of a single door, or one side of a set of double doors

12" Round Door Vision Port (1 each, with etched glass)



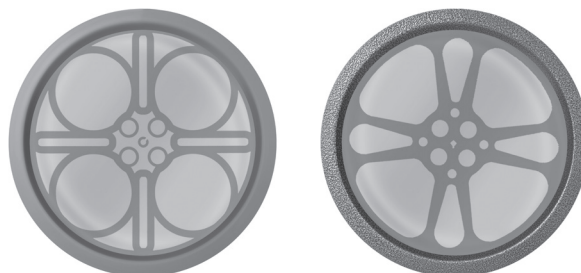
Fits 1¾" thick door. 13" outer diameter frame with 10" diameter window view.
Requires 12" diameter cutout through door. This product is not fire rated.

4-hole cast film reel laser-etched glass design (above left)	silver powder coated	DPM-1201C
	silver vein powder coated	DPM-1202C
	PC chrome powder coated	DPM-1203C
	gold vein powder coated	DPM-1205C
	black powder coated	DPM-1206C
	copper vein powder coated	DPM-120CC
	Jacob's Gold powder coated	DPM-120GC
Teardrop film reel laser-etched glass design (above right)	silver powder coated	DPM-1201T
	silver vein powder coated	DPM-1202T
	PC chrome powder coated	DPM-1203T
	gold vein powder coated	DPM-1205T
	black powder coated	DPM-1206T
	copper vein powder coated	DPM-120CT
	Jacob's Gold powder coated	DPM-120GT

Set includes:

- 2 circular steel frames (one for each side of the door)
- mounting screws
- etched window glass

18" Round Door Vision Port (1 each, with etched glass)



Fits 1¾" thick door. 19" outer diameter frame with 16" diameter window view.
Requires 18" diameter cutout through door. This product is not fire rated.

4-hole cast film reel laser-etched glass design (above left)	silver powder coated	DPM-1801C
	silver vein powder coated	DPM-1802C
	PC chrome powder coated	DPM-1803C
	gold vein powder coated	DPM-1805C
	black powder coated	DPM-1806C
	copper vein powder coated	DPM-180CC
	Jacob's Gold powder coated	DPM-180GC
Teardrop film reel laser-etched glass design (above right)	silver powder coated	DPM-1801T
	silver vein powder coated	DPM-1802T
	PC chrome powder coated	DPM-1803T
	gold vein powder coated	DPM-1805T
	black powder coated	DPM-1806T
	copper vein powder coated	DPM-180CT
	Jacob's Gold powder coated	DPM-180GT

Set includes:

- 2 circular steel frames (one for each side of the door)
- mounting screws
- etched window glass

Custom Door Vision Port Glass Etching



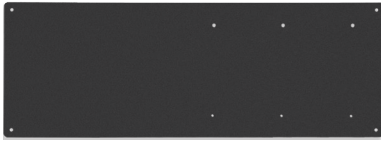
Add-on service with customer-supplied design.
Purchase of 12" or 18" Door Vision Port required.

custom glass etching service	DP-CGE
------------------------------	--------

GENERAL HARDWARE: HOUSE AND APARTMENT NUMBER SIGNS

House Number Sign Base Plate (aluminum, 1 each, with screws)

20"×7"



with holes for 3 characters, left or right justified	6012B3-*
with holes for 3 characters, centered	6012B3C-*
with holes for 4 characters, left or right justified	6012B4-*
with holes for 4 characters, centered	6012B4C-*
with holes for 5 characters, centered	6012B5-*

Fully Assembled House Number Sign

20"×7"



3 characters	right justified	6012HS3-†
3 characters	centered	6012HS3C-†
4 characters	right justified	6012HS4-†
4 characters	centered	6012HS4C-†
5 characters	centered	6012HS5-†

Fully Assembled Vertical House Number Sign



7"×30", 3 characters	centered	6012VS3-†
7"×30", 4 characters	centered	6012VS4-†
7"×30", 5 characters	centered	6012VS5-†

House Number Sign Characters (aluminum, 1 each)

5¼" tall



0	6012N0-*	I	6012LI-*
1	6012N1-*	J	6012LJ-*
2	6012N2-*	K	6012LK-*
3	6012N3-*	L	6012LL-*
4	6012N4-*	M	6012LM-*
5	6012N5-*	N	6012LN-*
6	6012N6-*	O	6012LO-*
7	6012N7-*	P	6012LP-*
8	6012N8-*	Q	6012LQ-*
9	6012N9-*	R	6012LR-*
½	6012N12-*	S	6012LS-*
A	6012LA-*	T	6012LT-*
B	6012LB-*	U	6012LU-*
C	6012LC-*	V	6012LV-*
D	6012LD-*	W	6012LW-*
E	6012LE-*	X	6012LX-*
F	6012LF-*	Y	6012LY-*
G	6012LG-*	Z	6012LZ-*
H	6012LH-*		

Apartment Number Sign Base Plate (aluminum, 1 each, with screws)

7½"×3"



with holes for 3 characters, centered	6013BC3-*
with holes for 3 characters, left or right justified	6013B3-*
with holes for 4 characters, centered	6013BC4-*
with holes for 4 characters, left or right justified	6013B4-*
with holes for 5 characters, centered	6013BC5-*

Replace the * in the product's SKU with the code for the desired color. 1=Silver, MB=Matte Black, BZ=Bronze Texture. See color samples on inside back cover.

Replace the † in the product's SKU with the code for the desired color combination. 1MB=Silver characters on Matte Black base plate, 1BZ=Silver characters on Bronze Texture base plate, MB1=Matte Black characters on Silver base plate, BZ1=Bronze Texture characters on Silver base plate. See color samples on inside back cover.

GENERAL HARDWARE: APARTMENT NUMBER SIGNS, SHELVES, SHELF BRACKETS

Fully Assembled Apartment Number Sign

7½"×3"



3 characters	left justified	6013ASL3-†
3 characters	right justified	6013ASR3-†
3 characters	centered	6013ASC3-†
4 characters	left justified	6013ASL4-†
4 characters	right justified	6013ASR4-†
4 characters	centered	6013ASC4-†
5 characters	centered	6013ASC5-†

Fully Assembled Apartment Directional Sign

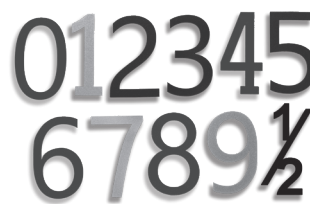
7½"×6"



3 characters, top and bottom	arrow on left	6013ASDL3-†
3 characters, top and bottom	arrow on right	6013ASDR3-†
4 characters, top and bottom	arrow on left	6013ASDL4-†
4 characters, top and bottom	arrow on right	6013ASDR4-†
5 characters, top and bottom	arrow on left	6013ASDL5-†
5 characters, top and bottom	arrow on right	6013ASDR5-†

Apartment Number Sign Characters (aluminum, 1 each)

2" tall



0	6013N0-*	I	6013LI-*
1	6013N1-*	J	6013LJ-*
2	6013N2-*	K	6013LK-*
3	6013N3-*	L	6013LL-*
4	6013N4-*	M	6013LM-*
5	6013N5-*	N	6013LN-*
6	6013N6-*	O	6013LO-*
7	6013N7-*	P	6013LP-*
8	6013N8-*	Q	6013LQ-*
9	6013N9-*	R	6013LR-*
½	6013N12-*	S	6013LS-*
A	6013LA-*	T	6013LT-*
B	6013LB-*	U	6013LU-*
C	6013LC-*	V	6013LV-*
D	6013LD-*	W	6013LW-*
E	6013LE-*	X	6013LX-*
F	6013LF-*	Y	6013LY-*
G	6013LG-*	Z	6013LZ-*
H	6013LH-*		

Replace the * in the product's SKU with the code for the desired color. 1=Silver, MB=Matte Black, BZ=Bronze Texture. See color samples on inside back cover.
Replace the † in the product's SKU with the code for the desired color combination. 1MB=Silver characters on Matte Black base plate, 1BZ=Silver characters on Bronze Texture base plate, MB1=Matte Black characters on Silver base plate, BZ1=Bronze Texture characters on Silver base plate. See color samples on inside back cover.

14ga Steel Fixed Shelf (1 each, with mounting hardware)



24"×4½" with ¾" front flange	6014FS244-‡
36"×4½" with ¾" front flange	6014FS364-‡
48"×4½" with ¾" front flange	6014FS484-‡

Steel Shelf Closet Rod Support Bracket (1 each)



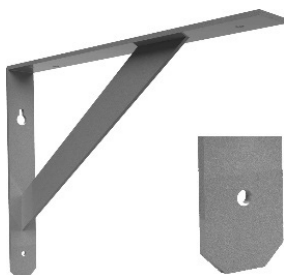
1½" diameter rod support

6014SCRS11-‡

Replace the ‡ in the product's SKU with the code for the desired color. See color samples and codes on inside back cover.

GENERAL HARDWARE: SHELF AND COUNTERTOP BRACKETS

Heavy Duty Shelf/Countertop Bracket (1 each)



11"×11"×1½"	Clipped bottom	6014SBHDC11-†
15"×11"×1½"	Clipped bottom	6014SBHDC15-†
22"×11"×1½"	Clipped bottom	6014SBHDC22-†

Heavy Duty Shelf/Countertop Bracket (1 each)



11"×11"×1½"	Gothic bottom	6014SBHDG11-†
15"×11"×1½"	Gothic bottom	6014SBHDG15-†
22"×11"×1½"	Gothic bottom	6014SBHDG22-†

Heavy Duty Shelf/Countertop Bracket (1 each)



11"×11"×1½"	Radius bottom	6014SBHDR11-†
15"×11"×1½"	Radius bottom	6014SBHDR15-†
22"×11"×1½"	Radius bottom	6014SBHDR22-†

Heavy Duty Shelf/Countertop Bracket (1 each)



11"×11"×1½"	Square bottom	6014SBHDS11-†
15"×11"×1½"	Square bottom	6014SBHDS15-†
22"×11"×1½"	Square bottom	6014SBHDS22-†

Replace the † in the product's SKU with the code for the desired color: 1=Silver Metallic, MB=Matte Black Texture, BZ=Bronze Texture, G=Jacob's Gold, RW=Rocket White. See color samples on inside back cover.

LIMITED LIFETIME MANUFACTURER'S WARRANTY

Goldberg Brothers warrants the functionality of its general hardware products with a limited lifetime manufacturer's warranty for defective parts under normal installation and use. Warranty is subject to repair or replacement of defective components at manufacturer's discretion and does not include installation costs.

This warranty does not apply to the cosmetic condition of any products or components. Goldberg Brothers does not warrant against the loss of finish at points where the rollers are in contact with the track. Powder coated hardware products may develop scratches or other signs of wear during manufacturing or normal installation and use. Further, Goldberg Brothers does not warrant against any cosmetic imperfections in the steel parts that may be seen through the finish.

Except for stainless steel components, Goldberg Brothers hardware products are not warranted against rust. Some rusting is possible on any raw steel or powder coated steel hardware installed outdoors or anywhere else that it may be exposed to high humidity, rain, snow, or running water.

This warranty does not include loss or defects caused by elements outside the control of Goldberg Brothers, Inc., such as natural disasters, weather, fire, water leakage, abuse, improper installation, or anything else deemed out of the control of Goldberg Brothers, Inc.

GENERAL HARDWARE PRODUCTS COLORS

Products with SKUs that end with a dash and asterisk -* are available in multiple colors.
Replace the asterisk * with the desired color code.

COLORS OPTIONS VARY BY PRODUCT LINE:

6001, 6002, 6003, 6004I, 6007, 6014 SKUs - raw steel and all 16 powder coat colors below

6004E, 6012, 6013 SKUs - Matte Black Texture, Bronze Texture, Silver Metallic

ECONOMY COLORS			STANDARD COLORS			UPGRADE COLORS	
							
RAW STEEL (not coated)	MATTE BLACK TEXTURE	BRONZE TEXTURE	BLACK	SILVER METALLIC	ARCH BRONZE	RUSTIC BROWN	JACOB'S GOLD
Color code "0"	Color code "MB"	Color code "BZ"	Color code "6"	Color code "1"	Color code "8"	Color code "4"	Color code "G"

DESIGNER COLORS								
								
PC CHROME	REGAL RED	ROCKET WHITE	BLUE RIBBON	FLINT GRAY TEXTURE	DARK GRAY TEXTURE	WHITE BRONZE TEXTURE	SILVER VEIN	COPPER VEIN

Use color code "D" and write the name of the designer color on the order form.

PLEASE NOTE:

- Due to variations in printers and display screens, all color representations above are approximate. Color sample cards are available. Ask your Goldberg Brothers sales representative for details.
- Raw steel does not have a protective coating. Rusting will occur.
- PC Chrome is a powder coat finish with a glossy, chrome-like appearance. It is not chrome plating.
- Steel components used with Matte Black Texture and Bronze Texture may have minor surface blemishes acquired during the manufacturing process. These superficial variations will be hidden by the powder coating and do not affect product performance.



GOLDBERG BROTHERS, INC.

- Award-winning barn door hardware
- House and apartment number signs
- Movie-themed home decor products
- Movie theater projection ports and film reels
- Secure package delivery systems
- Custom metal fabrication

10488 W. Centennial Rd., Suite 100

Littleton, CO 80127 USA

Phone (303) 321-1099 • Fax (303) 388-0749

goldbergbrothers.com